

## LED Flood Light - HeatSink (FE Series)

### High Reflectivity Pure Aluminum Reflector

Pure aluminum (AL 99.80%) provides much better reflectivity, anti-oxidation, and anti-color fading effects.

**250W**



### Tempered Glass Cover

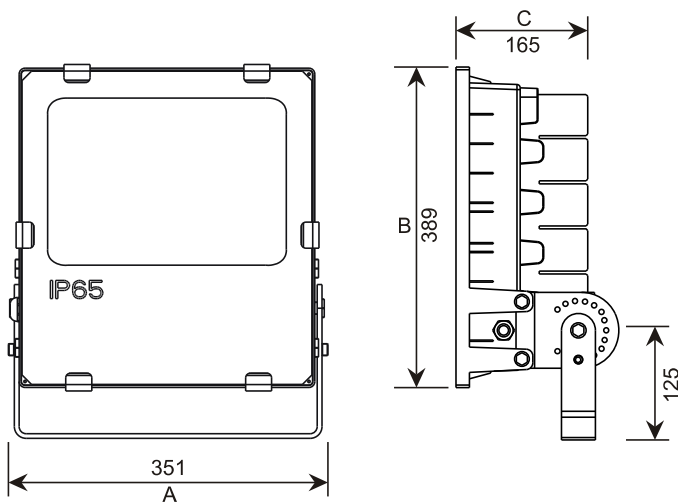
The 4mm thick tempered glass cover provides strong resistance to heat and impact and ensures operation safety.

### Reliable Thermal Design

The extruded AL6063 aluminum heat sink body is a better cost/thermal performance solution for its easy production but reliable thermal functions.

### IP65 Rated Ingress Protection

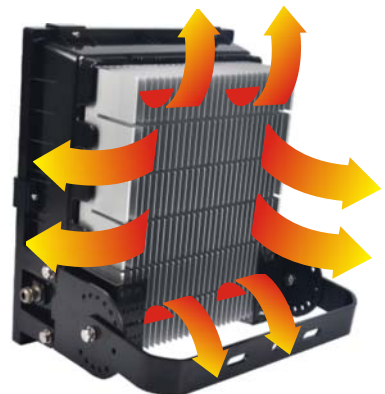
### Dimension



FE1250 (unit: mm)

### Heat Dissipation Sketch

The perfect combination of heat dissipation and thermal conduction. 3D type radiator which is formed from cooling modules and fin ducts can greatly lower down the temperature of light source, extending its life span.

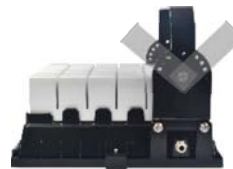


## Product Features



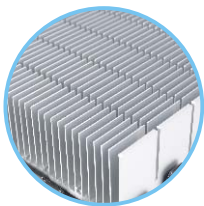
### Strong Die-Casted Housing

The strong structure design of this die-casted aluminum housing help protection flood light from any possible impacts and damages.



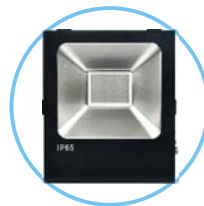
### Adjustable Multiple Angles Mounting Brackets

The heat sink assembly's mounting brackets have 15 holes to adjust to the desired mounting angle (up to 120°) for LED light installation conveniences.



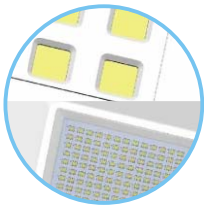
### Selection of High Quality Materials

Using AL6063 Aluminium for body heat extrusion, and thermal performance is stable and reliable.



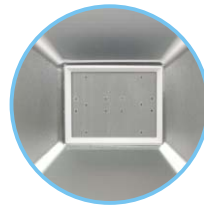
### Tempered Glass Cover

The 4mm thick tempered glass cover provides strong resistance to heat and impact and ensures operation safety. The tempered glass cover also supply better than industry average light transmittance rate over 91% maximum.



### Flexible Adoption of Great Variety SMD/COB LED Modules

This thermal design allows choices of great variety of SMD/COB LED modules and saves products series development costs and efforts.



### High Reflectivity Pure Aluminum Reflector

Pure aluminum (AL 99.80%) provides much better reflectivity, anti-oxidation, and anti-color fading effects.

## Application

Product Application: shopping malls, exhibition halls, hotel exterior, billboards, sculpture, the square night view, landscape lighting, grow lamps, etc.



Model Number	Power (W)	Size (mm)	PCB Size (mm)	Chip Model	LED QTY (pcs)	Series/Parallel	Power Supply
FE1100	100W	A:326xB:339xC:160	118x85	COB/3030	COB50Wx2/100	5S/20P	30V (3A)
FE1150	150W	A:326xB:339xC:160	118x85	COB/3030	COB70Wx2/150	5S/30P	30V (5A)
FE1200	200W	A:351xB:389xC:165	130x119	COB/3030	COB50Wx4/200	5S/40P	30V 6A)
FE1250	250W	A:351xB:389xC:165	130x119	COB/3030	COB75Wx4/250	5S/50P	30V (8A)

※ The above parameters are for reference only, ultimately you have to refer to the physical specification issued by the Company.

※ All the products are supplied in kits which does not include power and lamp beads.